

April 2021

Tel 604.792.1321 | Fax 604.792.9665 | <http://www.sd33.bc.ca/>



Imagine High Update

- Exterior gym work: install of cladding over spray foam insulation



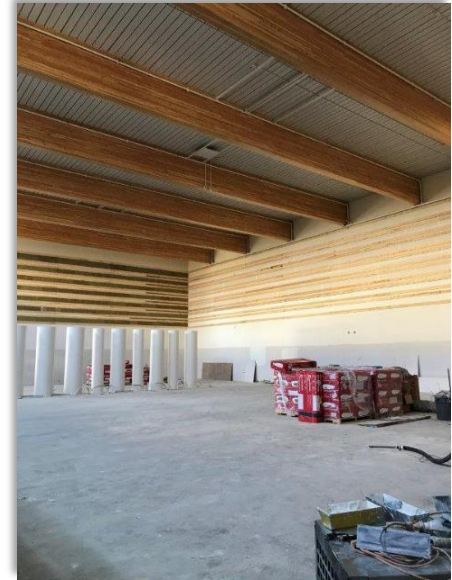
- Second floor windows above entrance provide daylight to the gym
- Chair and rail painting in first floor hallways



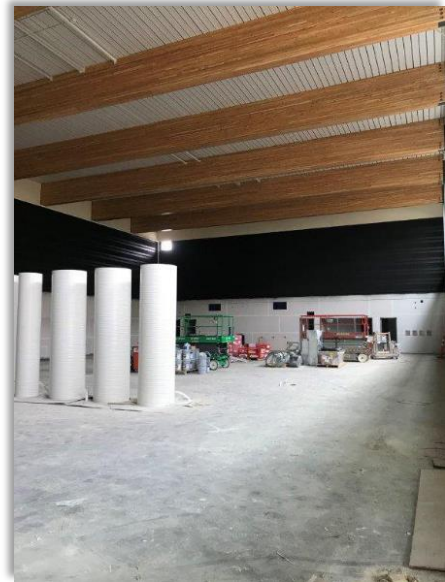
- Interior gym: finish work on Glulam beams
- Glulam column wraps for vertical columns in gym



- Gym interior: upper slat wall backing (before)



- Upper slat wall installed (after)



- Classroom millwork and flooring updates



- Reception desk install - main office
- Upstairs hallway – flooring and locker prep on the left wall



- Media tech waved ceiling wall molding (ceiling to follow)
- Roof supports for chiller and kitchen air handling unit

