

April 2022

Tel 604.792.1321 | Fax 604.792.9665 | <http://www.sd33.bc.ca/>



G.W. Graham Addition Update

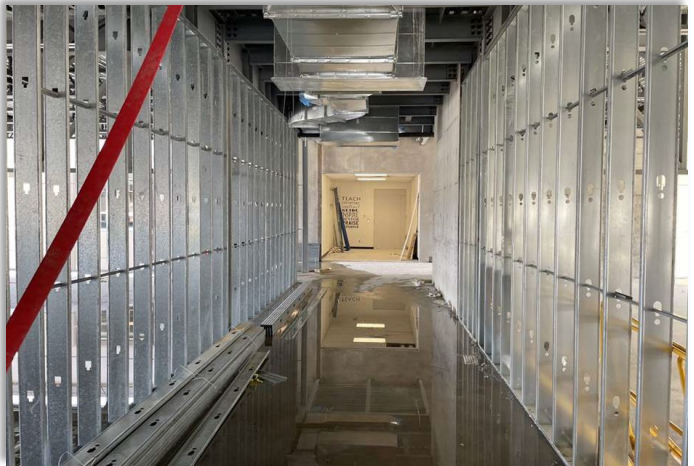
- Front of academic wing facing bus loop
- Covered entrance and bus waiting area



- Second floor classrooms



- Second floor hallway
- End of hallway is connected to existing hallway in the school



- Back side of addition. The structure in the middle will be the covered outdoor space



- Steel erection on the shop wing



- Mechanic shop and trade sampler area progress



- Drywall ready for first floor

