

April 2022

Tel 604.792.1321 | Fax 604.792.9665 | <http://www.sd33.bc.ca/>



Vedder Elementary Addition Update

- Bus loop widened to allow more busses in the loop. Student sidewalk shown on left with public sidewalk being installed on the right. A 4-foot chain link fence will separate the two sidewalks



- Brick work complete on exterior complete



- Looking east towards addition
- Looking down at roof of addition



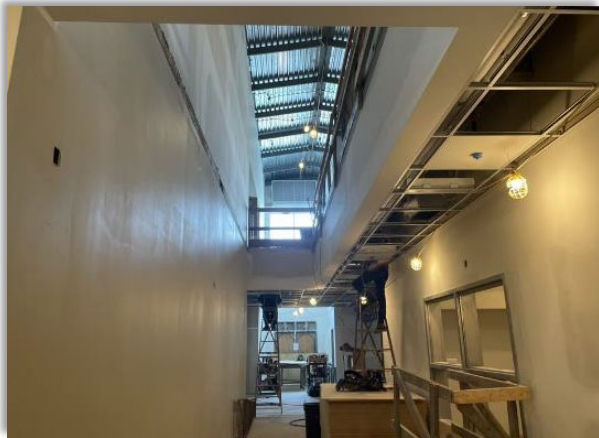
- Looking out from classroom across playground and towards GW Graham Secondary



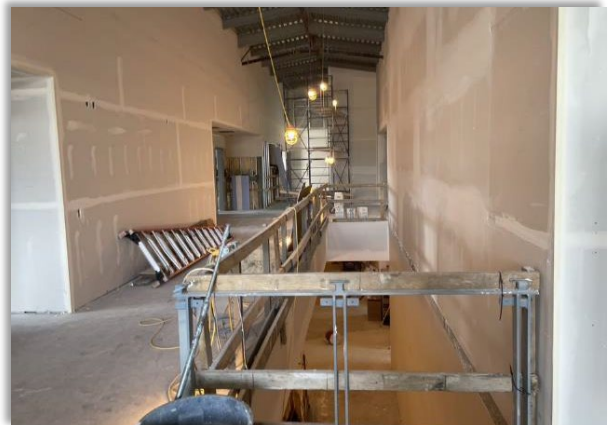
- Multi-purpose room first floor
- Multi-purpose room second floor



- First floor hallway
- Large window at second floor level gives light to the first floor as well



- Second floor hallway



- Classroom spaces

