

June 2022

Tel 604.792.1321 | Fax 604.792.9665 | <http://www.sd33.bc.ca/>



G.W. Graham Addition Update

- Installation of Windows and Exterior Sunshades



- Drywall Installation on lower floor academic wing



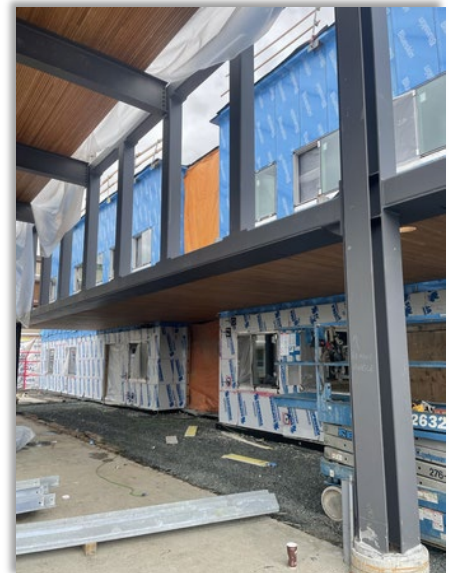
- Covered outdoor space and shops



- Covered outdoor space



- Connection from covered outdoor space to academic wing



- Shops with mezzanine



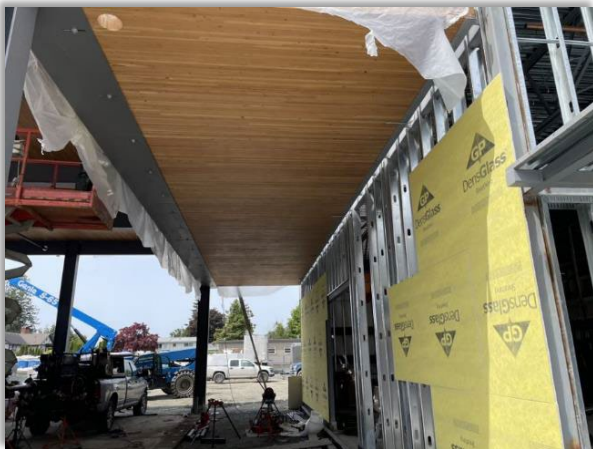
- Academic wing on left, covered outdoor space on right with covered connection



- Covered Outdoor Learning/Activity Space



- Connection from addition to outdoor space



- Shop addition includes Robotics shop with access to the covered learning space. Behind Robotics is the Trade Sampler Shop.



- Trade Sampler Shop



- Mezzanine for storage of shop materials



- Brick Work in progress



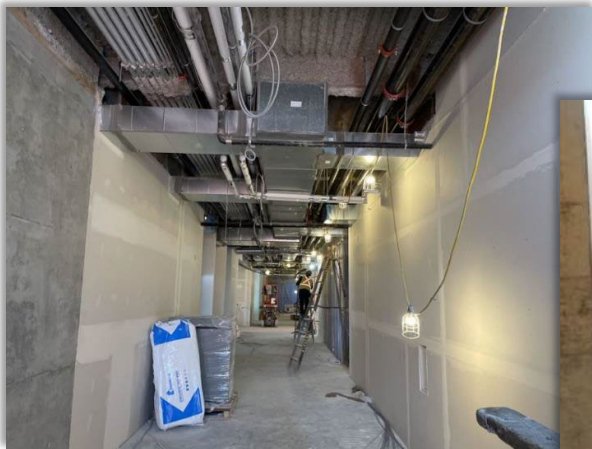
- Installation of Roof top ventilation units



- Classrooms boarded and mudding in progress



- Hallways boarded and mudding in progress.
 - Heating, plumbing and electrical have been installed.



- Second floor hallway



- Lower hallway with student counters on side



- Classroom flooring completed and covered to protect it.

