

July/August 2022

Tel 604.792.1321 | Fax 604.792.9665 | <http://www.sd33.bc.ca/>



Stitó:s Lá:lém Totí:lt Update

- Paving of bus loop
- Installation of fencing
- Prepping for parking lines



- Installation of gym floor



- Interior doors are here!



- All classroom millwork is on site!



- Learning commons



- Playground installation ongoing. Synthetic turf to be installed on top of the black rubber base.



- Exterior doors and shutters



- Exterior paving, curbing, line painting in progress



- Classrooms



- Foods classroom millwork



- Second floor hallway with flooring installed



- Large gym subfloor installation



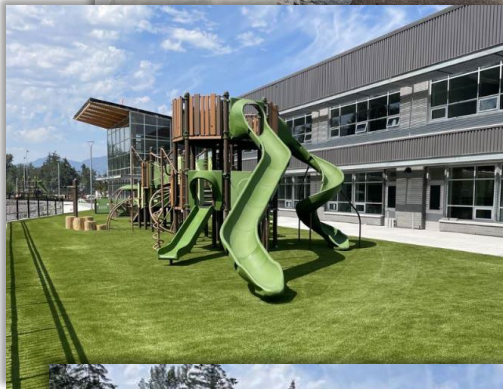
- 2 gaga ball pits to be installed on the turf field



- Swing area in progress



- Back of school facing the river



- Temporary irrigation set up for lower field.
- Modular fencing will be used to protect these areas as the grass establishes



- Hard surface play area near the basketball courts



- Installation of millwork in second floor classrooms



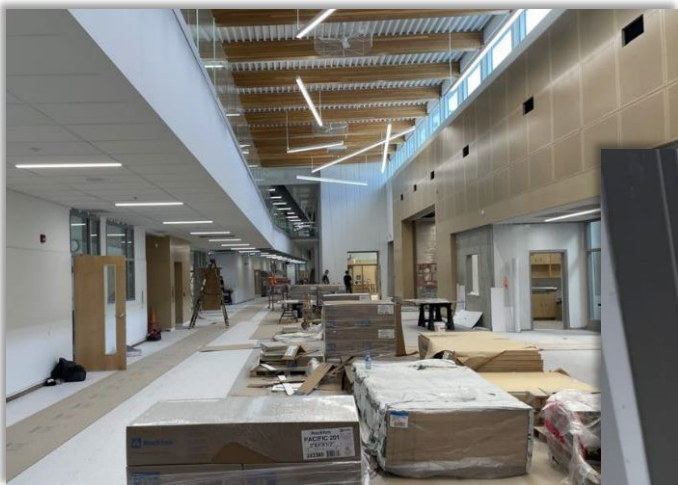
- Exterior windows and doors arrived and installed



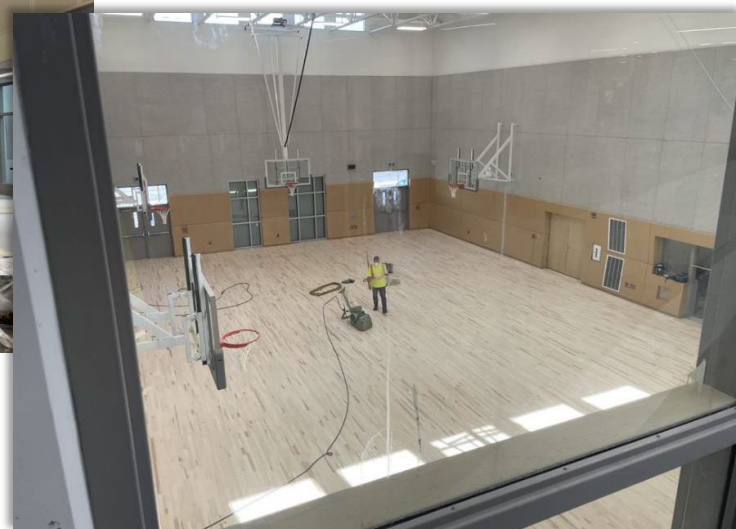
- East end parking lot with raised crosswalks installed



- Lower floor flooring and ceiling tile installed



- Gym floor finishing



- Washrooms



- School name installed on outside of building



- Hallway lockers installed



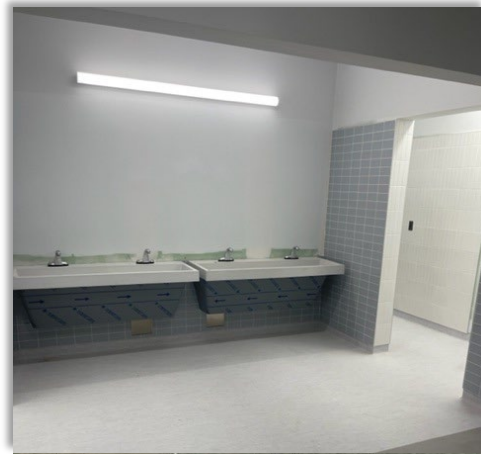
- Millwork installation continues



- Stairs and landings are polished concrete



- Waiting for installation of mirrors, then bathrooms will be ready!



- Upstairs Learning Commons



- Upstairs stairwell with windows to let in natural light



- Upstairs hallway



- Flooring installation in drama room



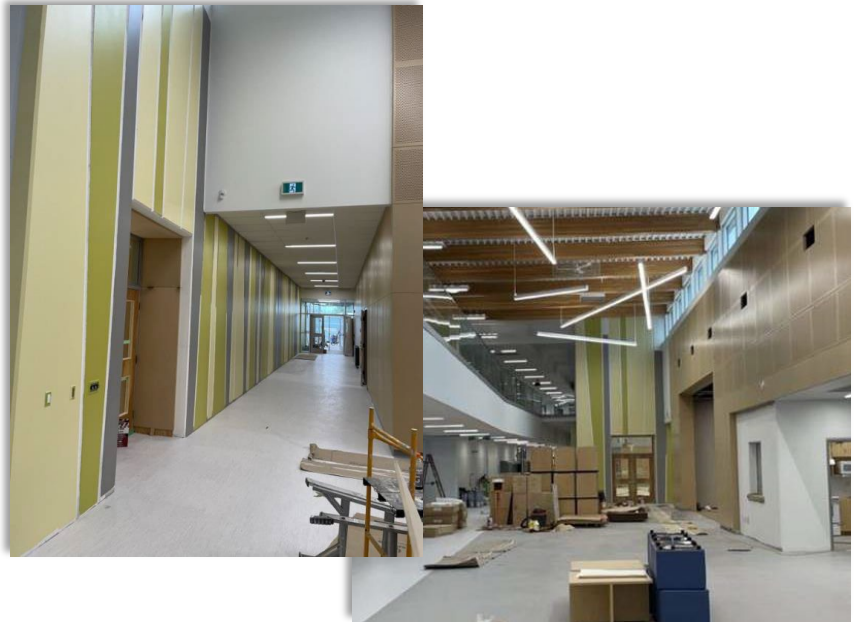
- The Stitō:s Lá:lém Totí:lt logo will be featured on this 2 story painted wall



- Large gym floor is being sanded



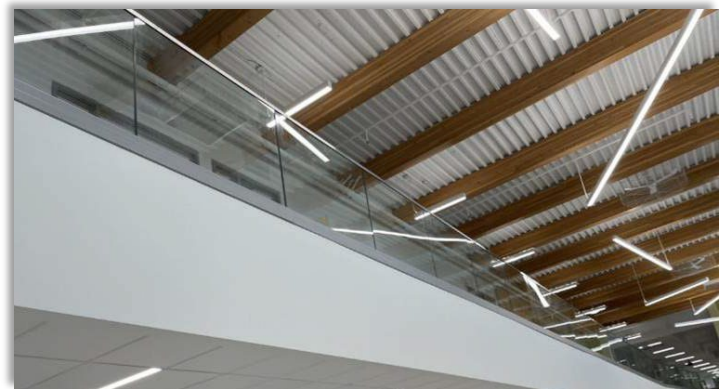
- Hallways are being painted



- Teachers are moving in!



- Glass railing installation complete



- Main entrance, office is located on the right



- Upper level sod complete on back and front of school

