

October 2022

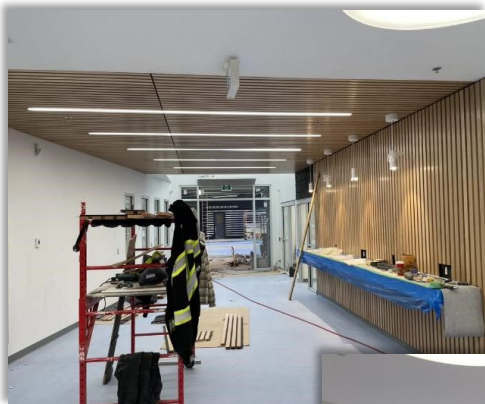
Tel 604.792.1321 | Fax 604.792.9665 | <http://www.sd33.bc.ca/>



G.W. Graham Addition Update

Hallway

- Looking out towards the covered area



- Looking towards bus loop



- Looking west, music room on the right (glass corner)



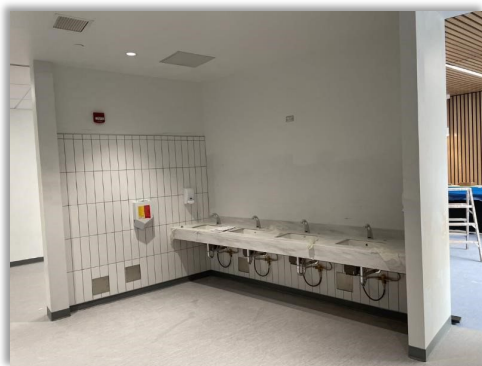
- music room with guitar hangars on the far wall



- Music practice rooms



- Universal Washrooms



- Universal Wheelchair accessible washroom



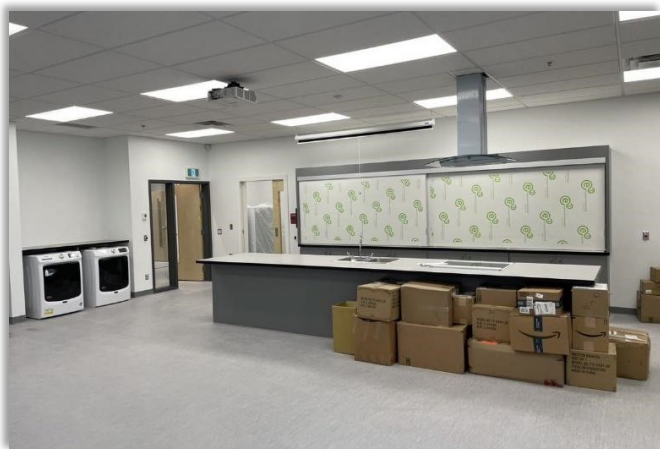
- Classrooms waiting for sliding glass doors



- Fashion Design



- Foods room



- The large rolling workstations are at the shop. These stations will be supported by the electrical cord reels that are hanging from the ceiling.



- Furniture delivery



- Locker locks have arrived and are being prepared for installation



Shops

- Mechatronics
 - The large, wrapped box is a CNC machine. The concrete floors are in the process of being sealed and then delivery and installation of shop equipment will begin.



- Looking towards the old shops



- Classroom between shops will include counters on each side and a row of computer desks down the centre.



- Shop office



- Trade Sampler

