

November 2022

Tel 604.792.1321 | Fax 604.792.9665 | <http://www.sd33.bc.ca/>



G.W. Graham Addition Update

- Entrance looking towards bus loop



- Entrance looking toward covered outdoor area



- Lower hallway (blue way will open into original school)



- Hallway looking west



- Classrooms



- Sliding glass classroom dividers being installed



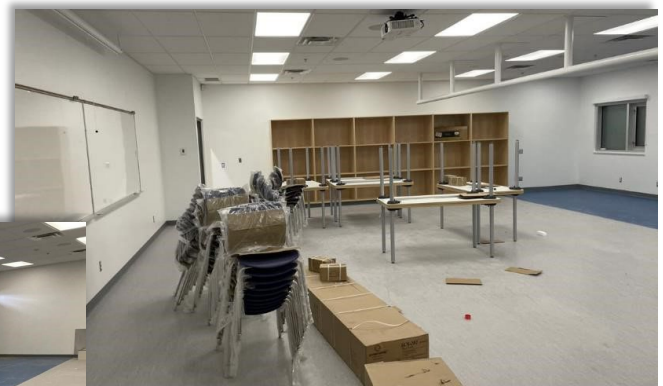
- Fashion Design



- Music room



- Kinesiology Classroom



- Kinesiology equipment to be installed on blue rubber flooring

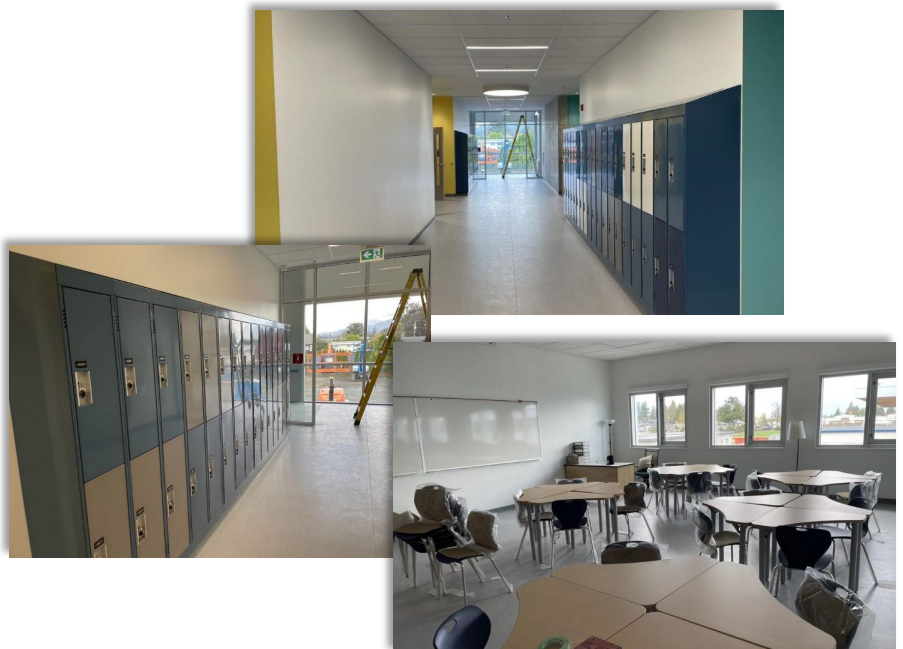
- Foods room



- Stairs to second floor



- Second floor



- Covered outdoor area

