

Inclusive & Culturally Responsive Practices Exploring Tier 1

Syós:ys lets'e th'ále, lets'emó:t

~One heart, one mind, working together for a
common purpose.~





Our Core Values

We provide a learning and working environment where these core values are central to all that we do.



Equity

We commit to ensure that everyone receives the required support and experiences they need to be successful and fulfill their potential.



Kindness

We demonstrate caring, compassion and empathy towards everyone in order to create a spirit of connectedness in our community.



Inclusion

We believe that meaningful inclusion is a right and we support all learners to feel safe, supported and connected through programming that promotes diversity and personalization.



Collaboration

We develop strong relationships and achieve the shared goals in our Strategic Plan through a framework of trust and respect.



Innovation

We will continue to be curious, creative and open to new ideas so that we can produce high-quality learning outcomes across the system.



Inclusion

We believe that meaningful inclusion is a right and we support all learners to feel safe, supported and connected through programming that promotes diversity and personalization.

Goals

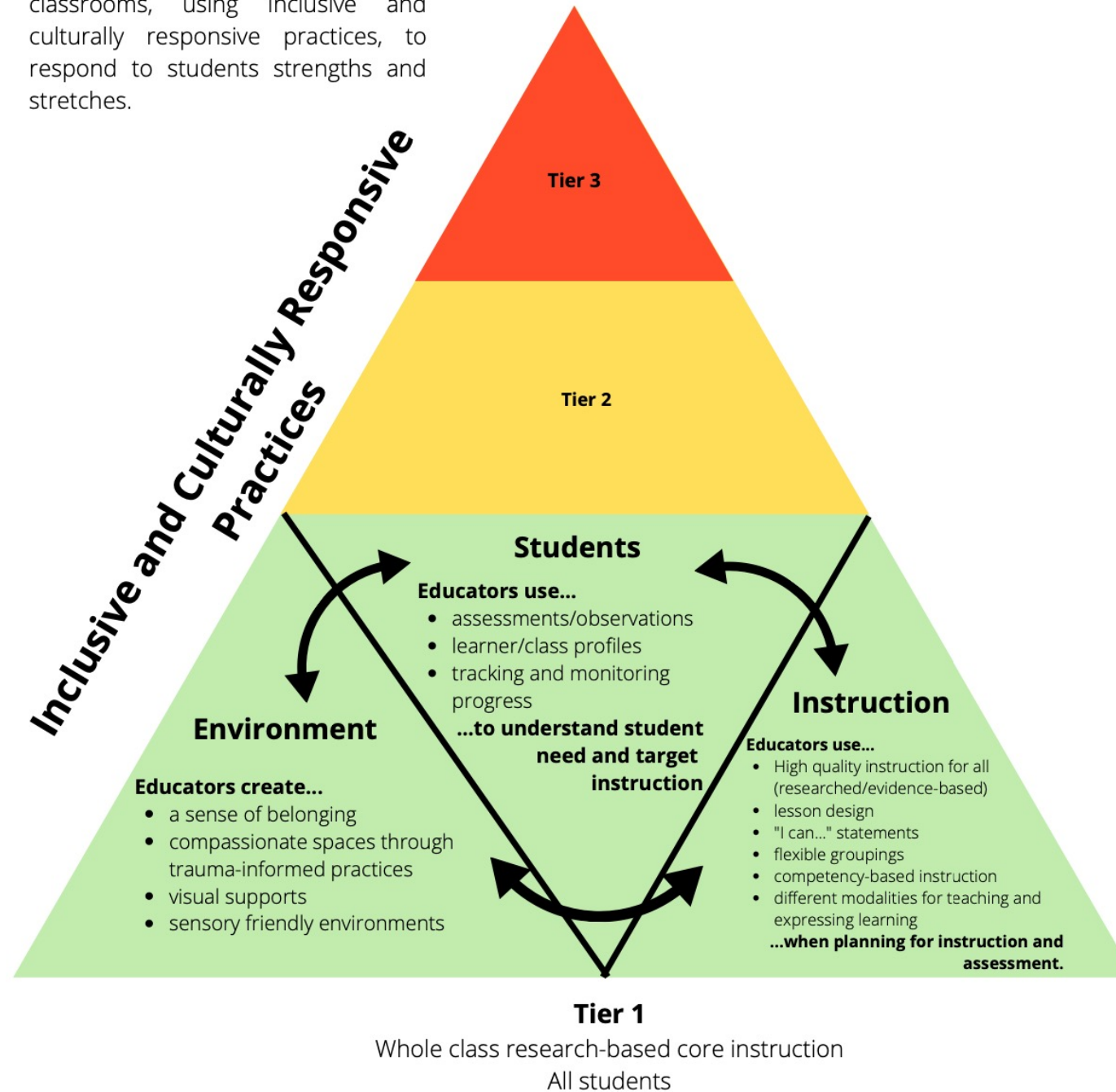
- Collective understanding of Inclusive Practices
 - Learning Services (Curriculum, Indigenous Ed, Student Services)
 - School Leaders
- Definition of Tier 1
- Continuation of Growth –not a NEW WAVE
- Next steps: Individuals, Schools, District

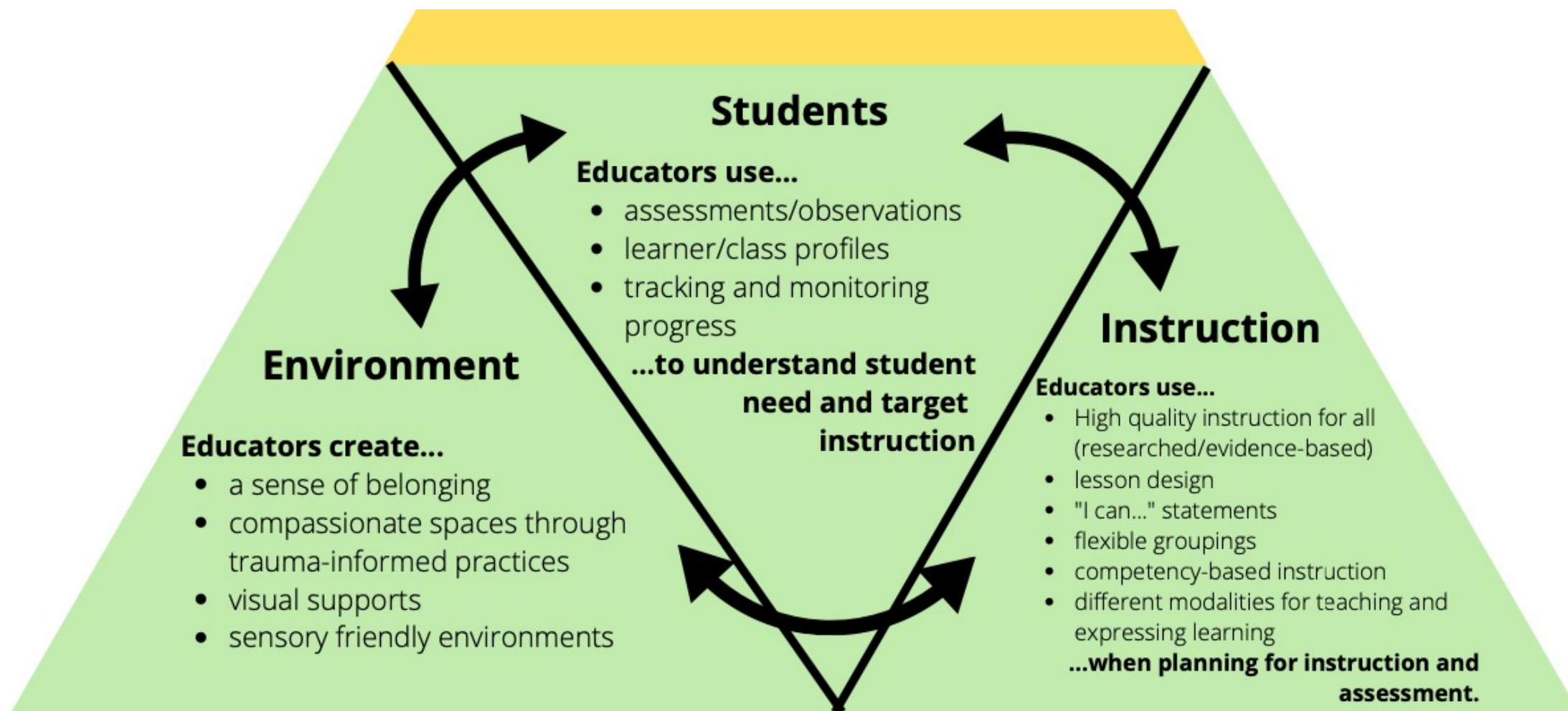
Inclusive Practices

*“Inclusion means that **all** students have a sense of **belonging**, of being **included** and **cared for**, and of **interconnectedness** with something larger than themselves—of being a part of a **community**.”*

~Jennifer Katz

We strive to create compassionate classrooms, using inclusive and culturally responsive practices, to respond to students strengths and stretches.





Tier 1

Whole class research-based core instruction

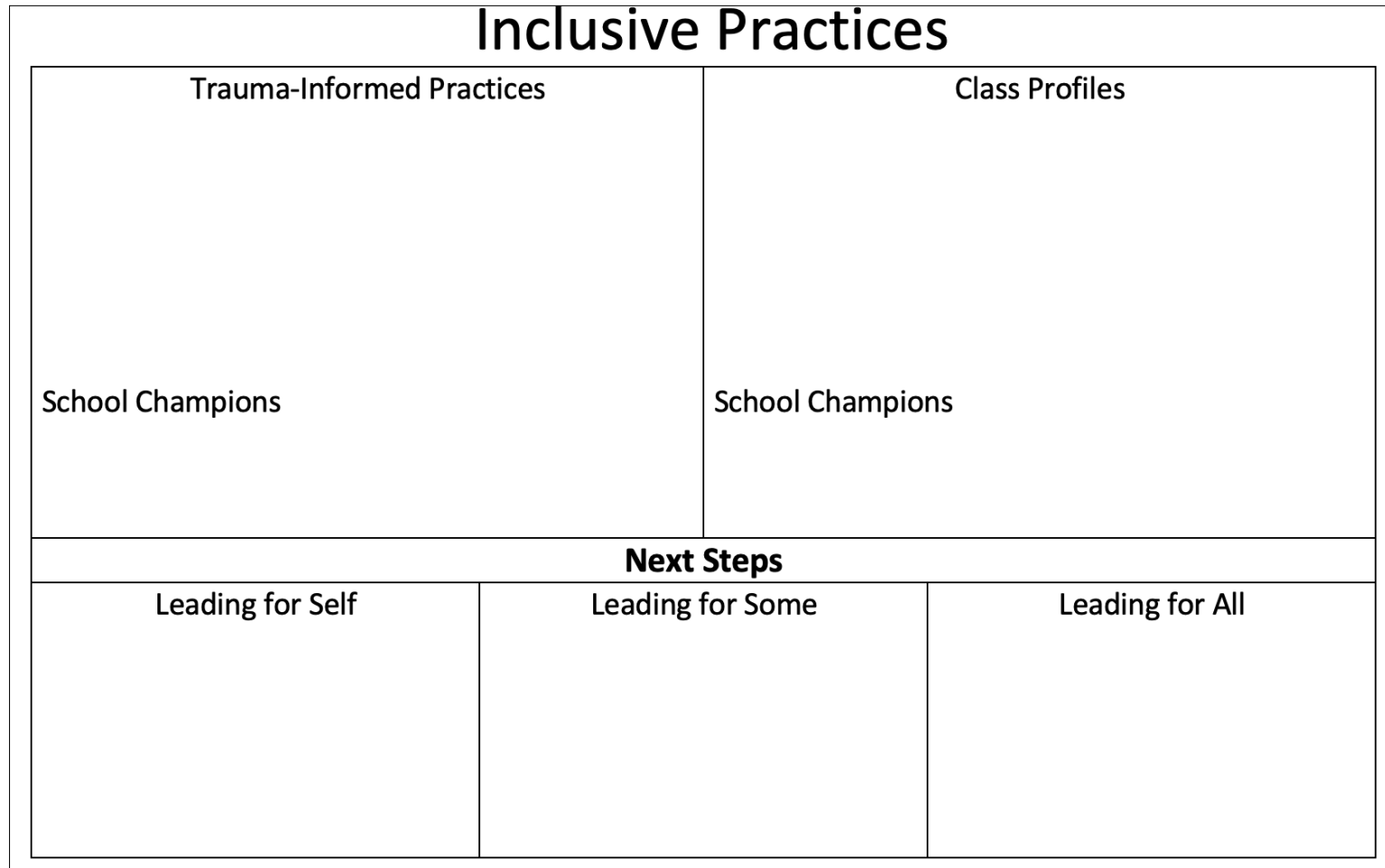
All students

Guiding Questions

Considering your 90 Day Cycle and School Growth Plan...

- What are the strengths of the Tier 1 elements in your school?
 - Student; Environment; Instruction
- What elements do you need to protect?
- What elements do you need to nurture or create a pathway for?

Ex. Pathway for Inclusive Practices



Goals

- Collective understanding of Inclusive Practices
 - Learning Services (Curriculum, Indigenous Ed, Student Services)
 - School Leaders
- Definition of Tier 1
- Continuation of Growth –not a NEW WAVE
- Next steps: Individuals, Schools, District



Curriculum: Shawna Peterson, Indigenous Ed, Jaimee Charlie,
Student Services, Brenda Calendino