

School Supports

- District Team and School Team complete school profile
- ELC teacher collaborates with school teams on Tier 1 instruction and provides intervention to students identified by School Team
- Literacy Coordinators provide in-service to classroom teachers and learning assistant teachers
- Review student data every 6 weeks and at end of 90 day cycle
- ELC teachers meet weekly for collaborative problem-solving and in-service
- Every school receives support for 1 term, 2 terms, or half year

School Team

- Classroom Teachers, Learning Assistance Teachers, Principal/Vice-Principal
- ELC Teacher

District Team

- Literacy Coordinators, District Principals, Assistant Superintendents
- ELC Teacher

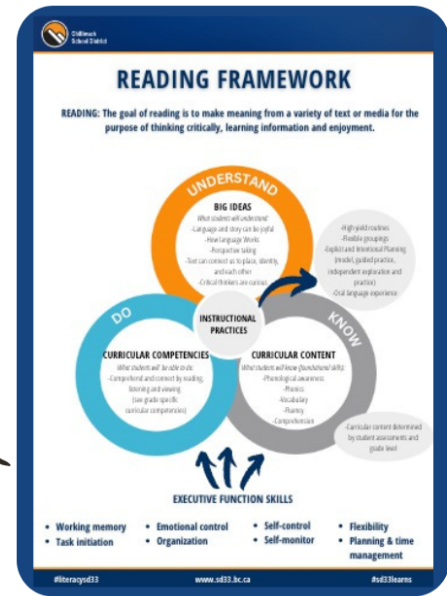
Contact Information

Nicole Driscoll – nicole_driscoll@sd33.bc.ca
District Principal of Early Learning

Shawna Petersen – shawna_petersen@sd33.bc.ca
District Principal of Assessment & Instruction

Paula Jordan – paula_jordan@sd33.bc.ca
Assistant Superintendent

Instructional Planning Framework



Class Reading Profile

Teacher _____ Year _____

Beginning	Extending	Beginning	Extending	Beginning	Extending	Beginning	Extending
Vocabulary		Determining Importance		Summarizing		Synthesizing	
Questioning		Inferring the Big Ideas		Making Connections		Reflecting	
Beginning		Extending		Beginning		Extending	
NEED MORE INFORMATION		FOLLOW UP		CLASS FOCUS			

Learning Experiences for All Students

Whole Class What makes sense to efficiently teach in whole class lesson? What resources do you need to teach whole class?	Small Group Instruction What makes sense to teach in small group, guided lesson? What resources do you need to teach small group?
Targeted In Class Support Which learners need in-class intervention or support?	

Progress Monitoring
Informs instruction for whole class and small group instruction

Observations	Checklists	Self-Assessments
Conferences	Exit Slips	Reflections
Quizzes	Student Tasks	Check-Ins

Instructional Decisions
Be intentional about who you are teaching, what they know, and what they need to know.