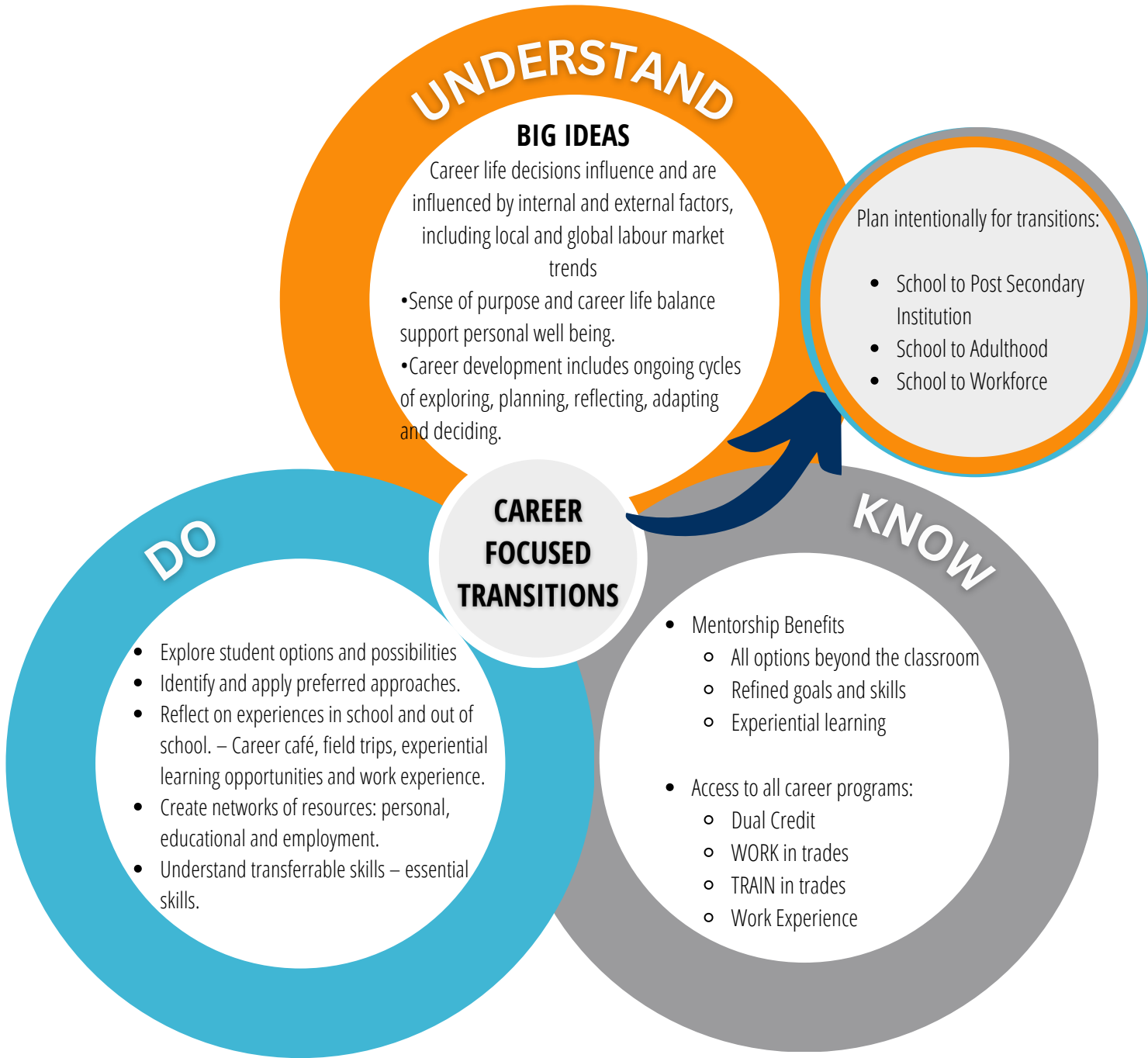




TRANSITIONS FRAMEWORK: CAREER PROGRAMS



We believe that Career Education and career development are critical components of our education system. All students need equitable access to safe, practical, community – based learning opportunities that support skill development, career exploration and transition planning. Career programs need to be responsive to both systemic developments and the ever-shifting needs of our students. A robust and effective Career Education Program relies on strong school-based teams, supported by a strong district team, with a shared focus on innovation, collaboration, inclusion and consistency.