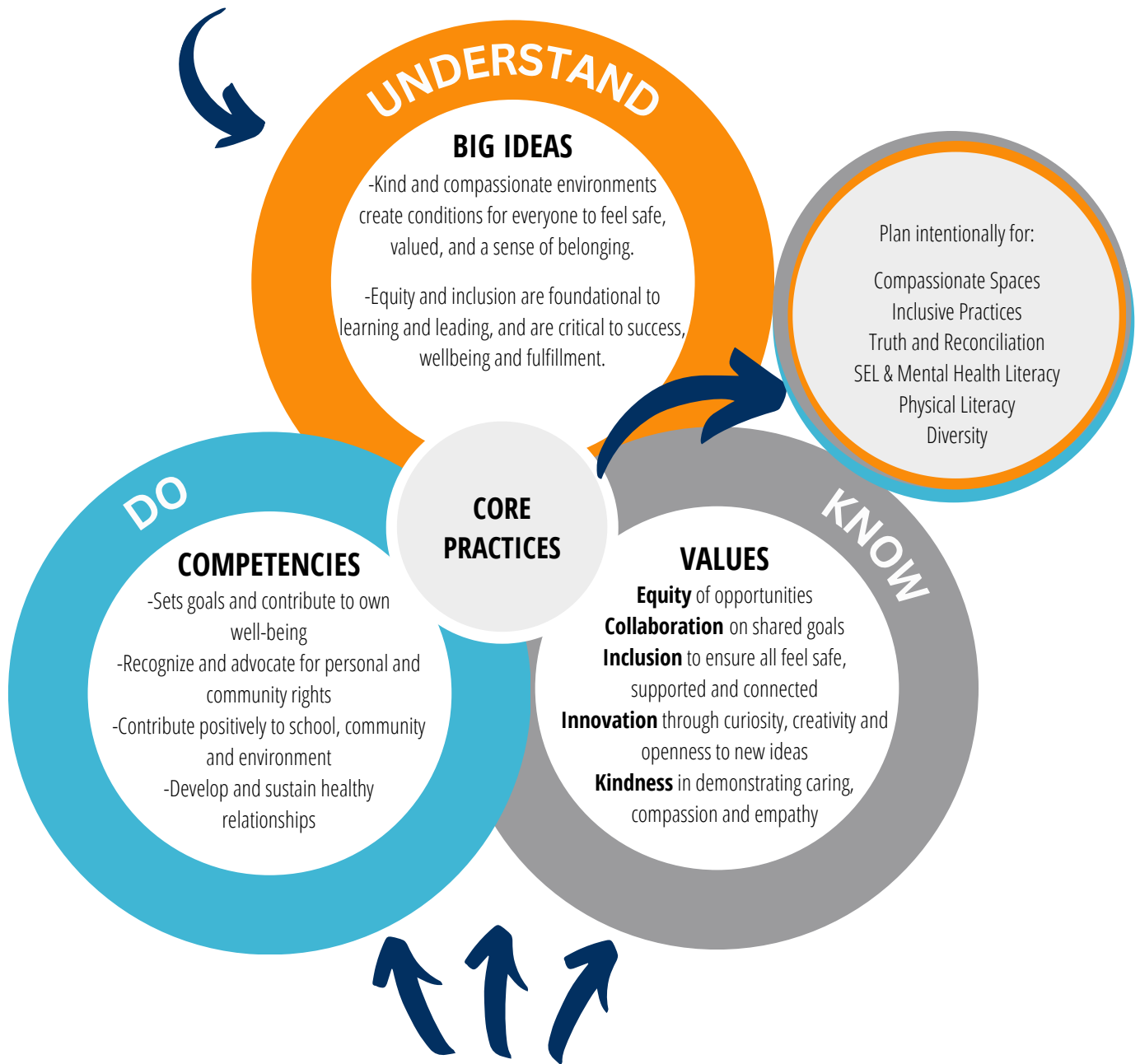




HUMAN & SOCIAL DEVELOPMENT FRAMEWORK

Human and social development aims to create a culture in which we celebrate diversity, embrace inclusion and foster a sense of belonging to ensure all learners thrive.



EXECUTIVE FUNCTION SKILLS

- Working memory
- Emotional control
- Self-control
- Flexibility
- Task initiation
- Organization
- Self-monitor
- Planning & time management